

ATM withdrawals*

Wolfgang Trutschnig

October 15, 2016

1 Quick overview

ymd	weekday	nr_weekday	sum_out	holiday
2007-01-01	Mon	1	4040	1.00
2007-01-02	Tue	2	22760	1.50
2007-01-03	Wed	3	18810	0.00
2007-01-04	Thu	4	24910	0.00
2007-01-05	Fri	5	25650	0.50
2007-01-06	Sat	6	5650	1.00

Table 1: First six lines of the dataset

The dataset (see Table 1) contains daily withdrawn amounts in the period from 2007-01-01 till 2009-12-31 (30 entries are missing). We expect weekdays and holidays to have a strong influence on withdrawn amounts and, additionally, to see an impact of the financial crisis starting with autumn 2008. Figure 1, Figure 2 as well as Table 2 confirm this suspicion.

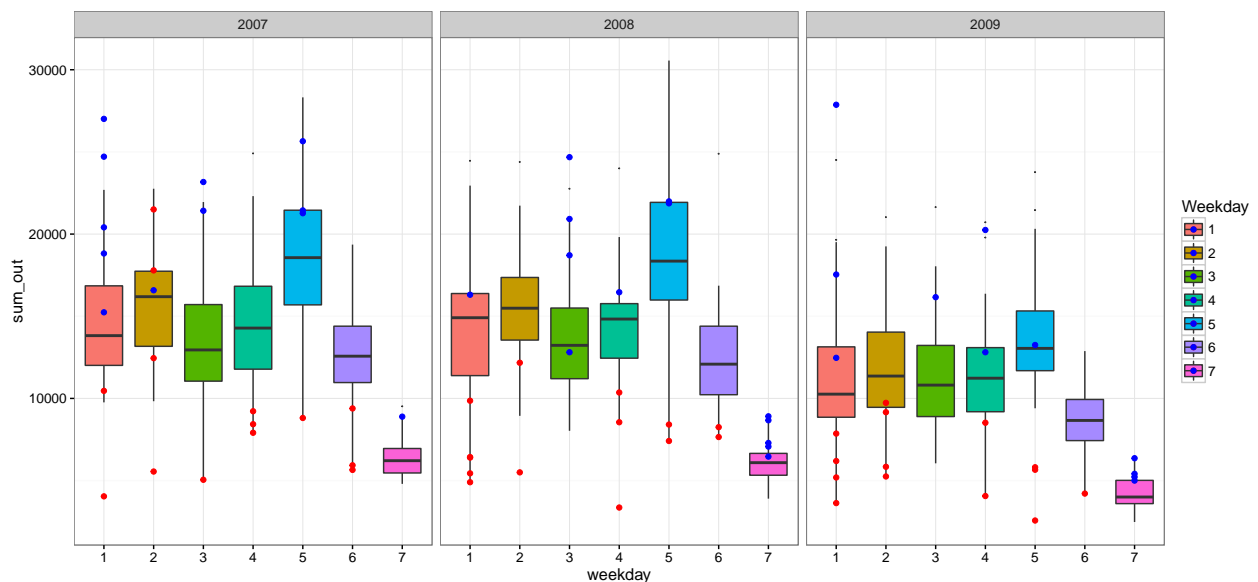


Figure 1: Boxplot per day of week and year, the medians are also printed in Table 2

Considering all years together the median withdrawn amount is 13060 € on Mondays, 14315 € on Tuesdays, 12525 € on Wednesdays, 13200 € on Thursdays, 16630 € on Fridays, 10950 € on Saturdays, and 5490 € on Sundays.

*This report was created on 2016-10-15 12:09:54

weekday	year	sum_out
Mon	2007	13820.00
Mon	2008	14910.00
Mon	2009	10260.00
Tue	2007	16190.00
Tue	2008	15490.00
Tue	2009	11360.00
Wed	2007	12950.00
Wed	2008	13230.00
Wed	2009	10810.00
Thu	2007	14280.00
Thu	2008	14830.00
Thu	2009	11230.00
Fri	2007	18565.00
Fri	2008	18355.00
Fri	2009	13045.00
Sat	2007	12570.00
Sat	2008	12085.00
Sat	2009	8660.00
Sun	2007	6210.00
Sun	2008	6090.00
Sun	2009	4000.00

Table 2: Median withdrawn amount per year and day of week

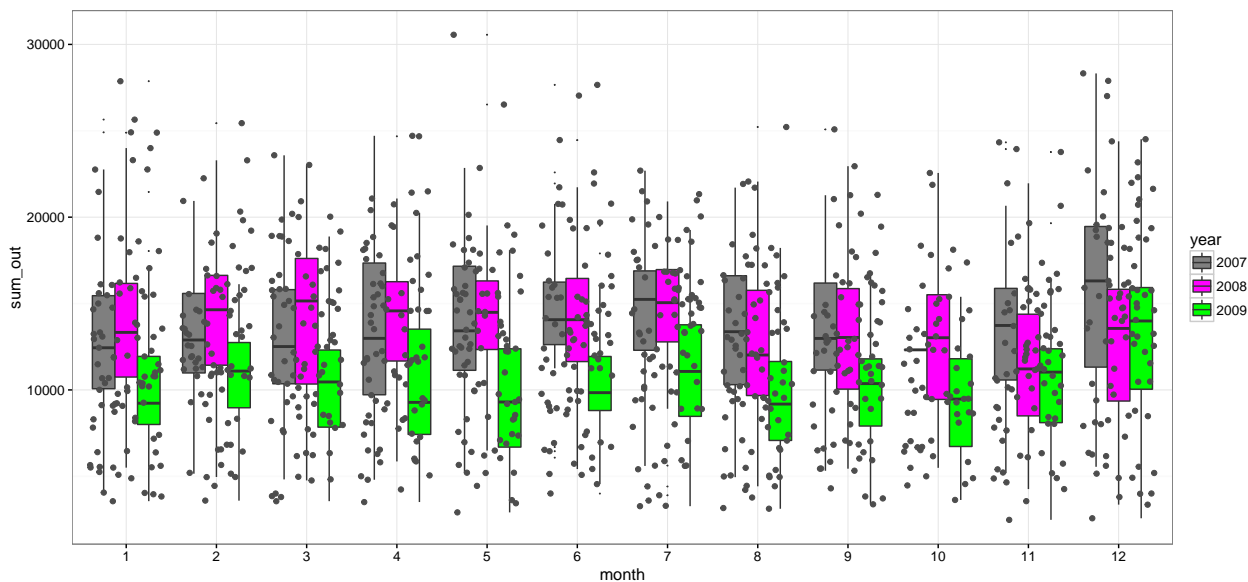


Figure 2: Boxplot per month, the impact of the financial crisis starting with autumn 2008

2 Some additional observations

The biggest amount of all three years (30560 €) was withdrawn on Fri, 2008 – 05 – 02. The smallest amount (2480 €) was withdrawn on Sun, 2009 – 11 – 22. The median withdrawn daily amount in the year 2007 was 3670 € higher than the one in 2009.